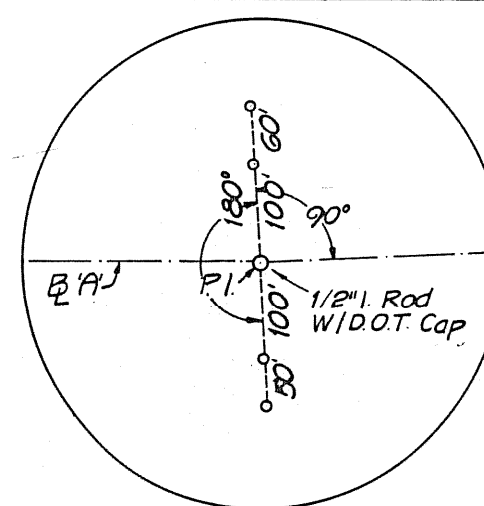


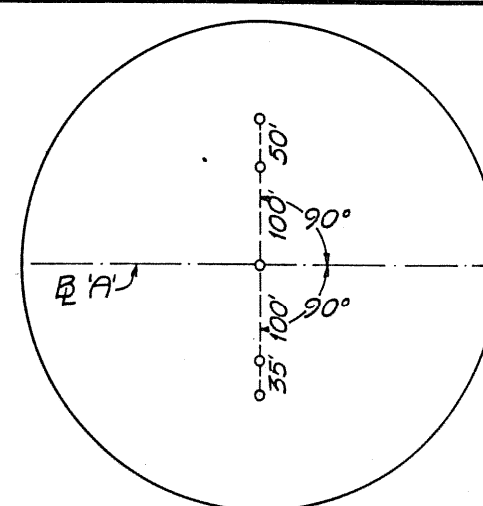
• Denotes 1/2" I. Rod
W/DOT Plastic Cap
(On Reference Points)

FED. ROAD DIV. No.	STATE	F A PROJECT NO.	FISCAL YEAR	SHEET No.
3	FLA.			

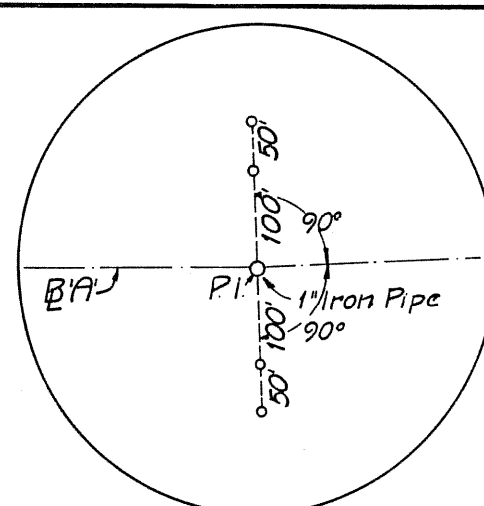
State Job No.



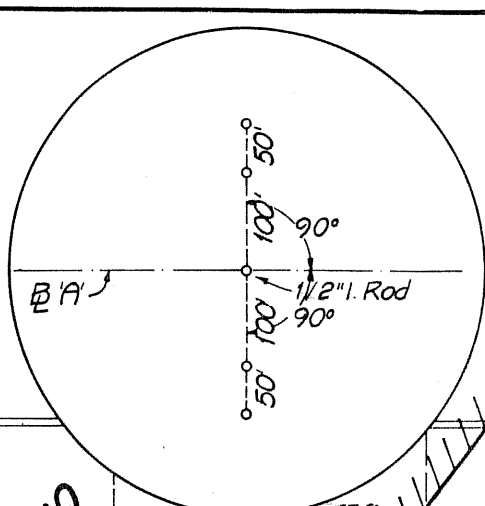
P.I. Sta. 48+67.33(B'A)



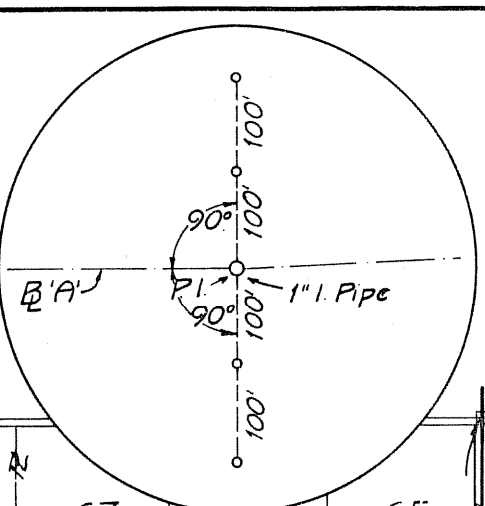
P.O.T. Sta. 58+09.26(B'A)



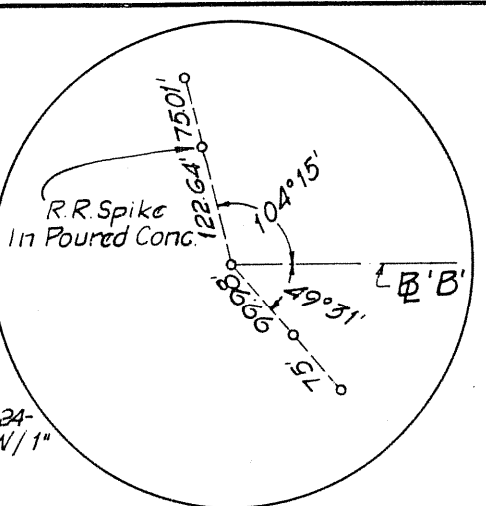
P.I. Sta. 75+12.31(B'A)



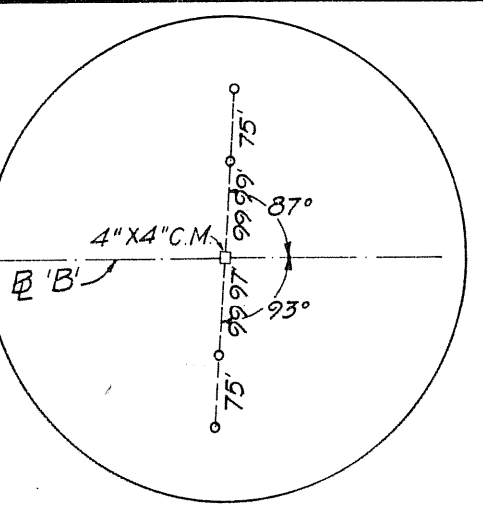
P.O.T. Sta. 86+30.25(B'A)



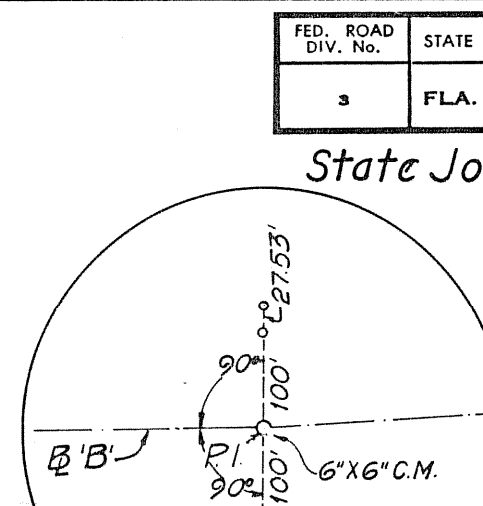
P.I. Sta. 101+53.75(B'A)



Begin Survey Sta. 254+39.66(B'B)



P.O.T. Sta. 267+71.92(B'B)



P.I. Sta. 281+04.13(B'B)

(NW Cor. Of Sec. 33-24-28)

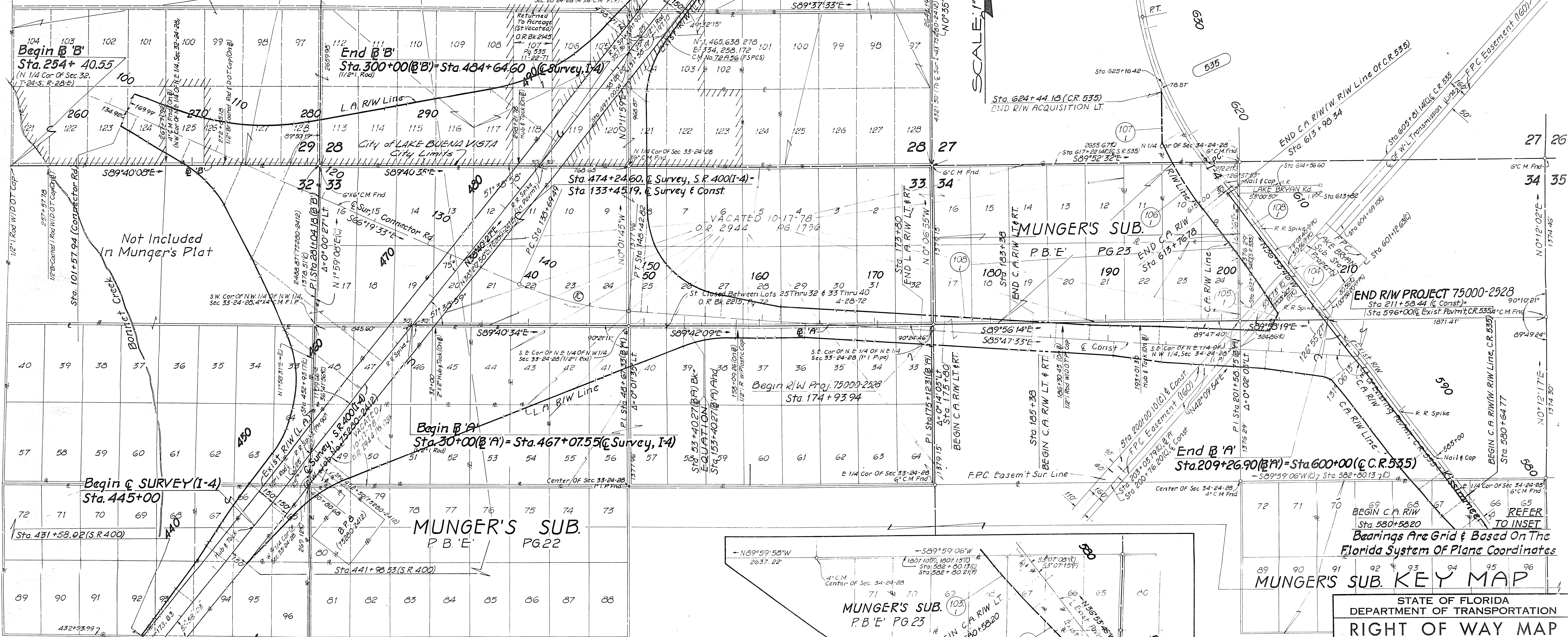
NOTE-Lot Dimensions Are 330'X660'(P)
Less St-30(15/15)(P) And/Or Allieu 15'(P)
Dimensions, When Applicable

VACATED (Except Lot 125)
O.R. 1535, Pgs. 529, 533, 535
4-19-66

End of SURVEY (I-4)
Sta. 505+00

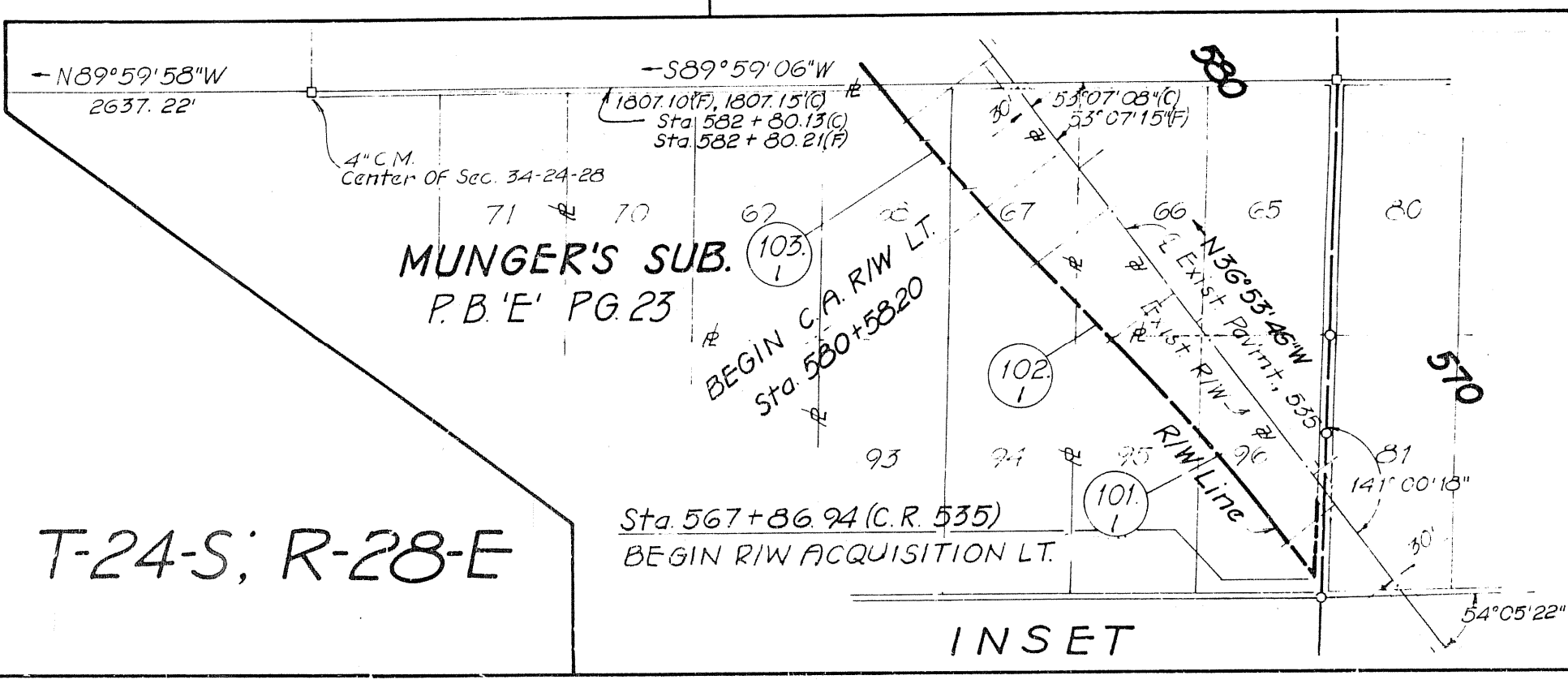
VACATED (Except Lots 102, 103 & 124)
O.R. 1564, Pg. 175, 8-4-66

SCALE: 1"=400'



CURVE DATA									
No.	P.I. Sta.	P.C. Sta.	P.T. Sta.	Δ	Dir.	D	T	L	R
535	624+39.30	617+53.22	631+00.01	28°56'09"	Rt	2°	608.08'	1346.79'	2864.79' (Arc)
10	143+60.89	138+69.49	148+42.82	19°28'	Lt	2°	491.40'	973.33'	2864.79' "

UTILITIES TABULATION
PWR-Fla Power Corp., St. Petersburg
TEL-Fla Telephone Corp., Leesburg
GAS-Fla Gas Transmission Co., Winter Park
Peoples Gas Systems, Inc., Orlando



STATE OF FLORIDA DEPARTMENT OF TRANSPORTATION RIGHT OF WAY MAP			
STATE ROAD NO. 530		Orange COUNTY	
BY	DATE	APPROVED BY	DATE
DRAWN Tolton	2-79	W.A. Lawton	7-28-80
TRACED	"	2-21-79	DISTRICT ENGINEER
CHECKED			ENGINEER OF RIGHT OF WAY
COMPARED			
INDEXED			
SECTION 75000-2528 SHEET 1 OF			

CONNECTOR RD.-I-4 (DISNEY WORLD) Interchange

Bk. No. 514388

Bk. No. 1020994 (Proposed Intchq)
Surveyor-L. L. Girvin

State Job No.

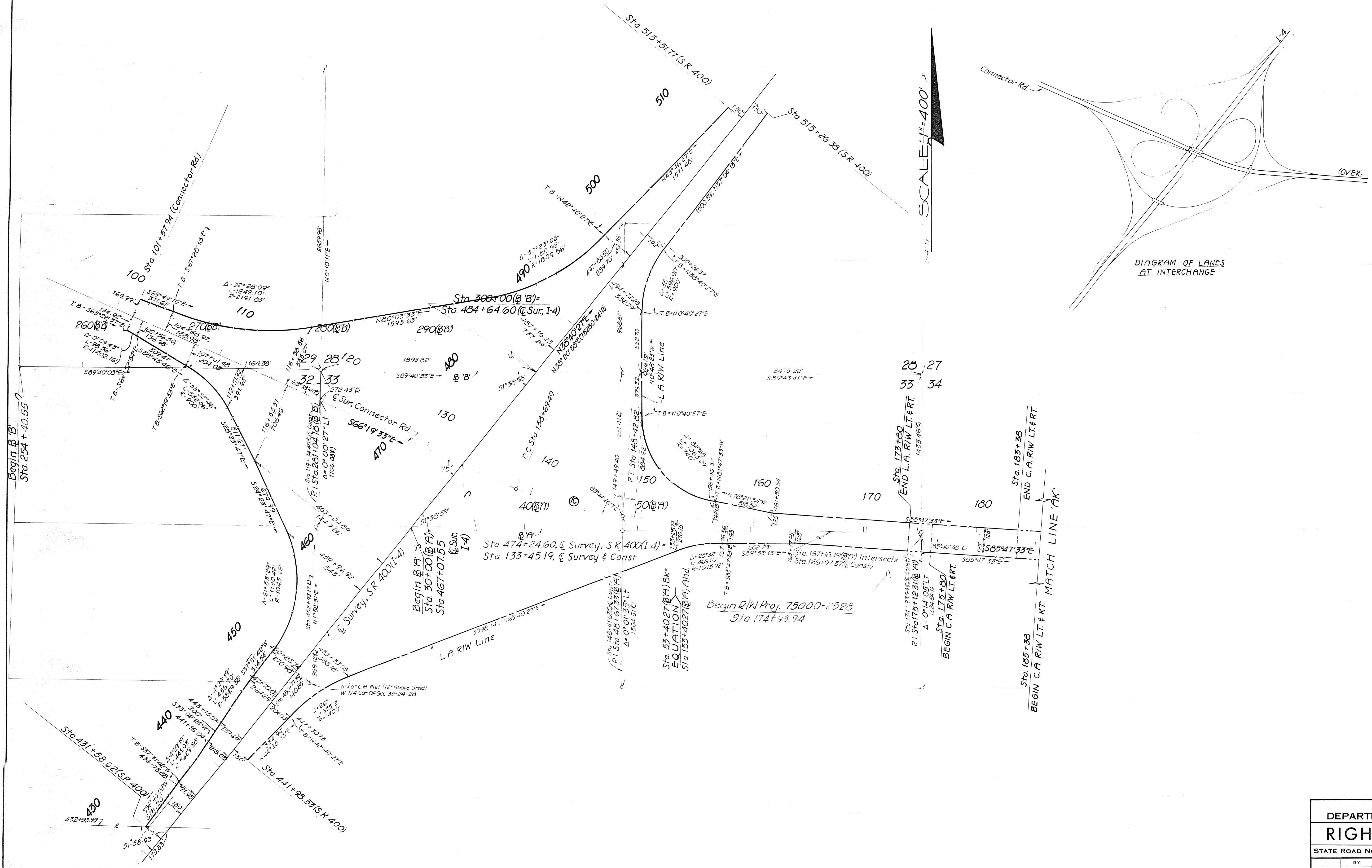


DIAGRAM OF LANES AT INTERCHANGE

SCALE: 1"=400'

CURVE DATA									
No.	P.I. Sta.	P.C. Sta.	P.T. Sta.	Δ	Dir.	D	T	L	R
1C	143+60.89	138+69.49	148+42.82	19°28'	Lt	2°	491.40'	973.33'	2864.79' "

T-24-S; R-28-E

STATE OF FLORIDA DEPARTMENT OF TRANSPORTATION			
RIGHT OF WAY MAP			
STATE ROAD NO. 536		Orange, COUNTY	
DRAWN	BY	DATE	APPROVED BY
Talton		6-21-79	W.A. Sandlin
TRACED			
CHECKED			
COMPARED			
INDEXED			
SECTION 75000-2528		SHEET 2 OF	

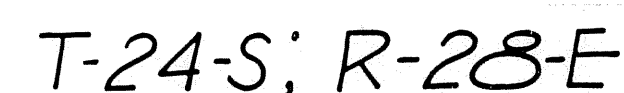
CONNECTOR RD. - I-4 (DISNEY WORLD) Interchange

B1 No 514388

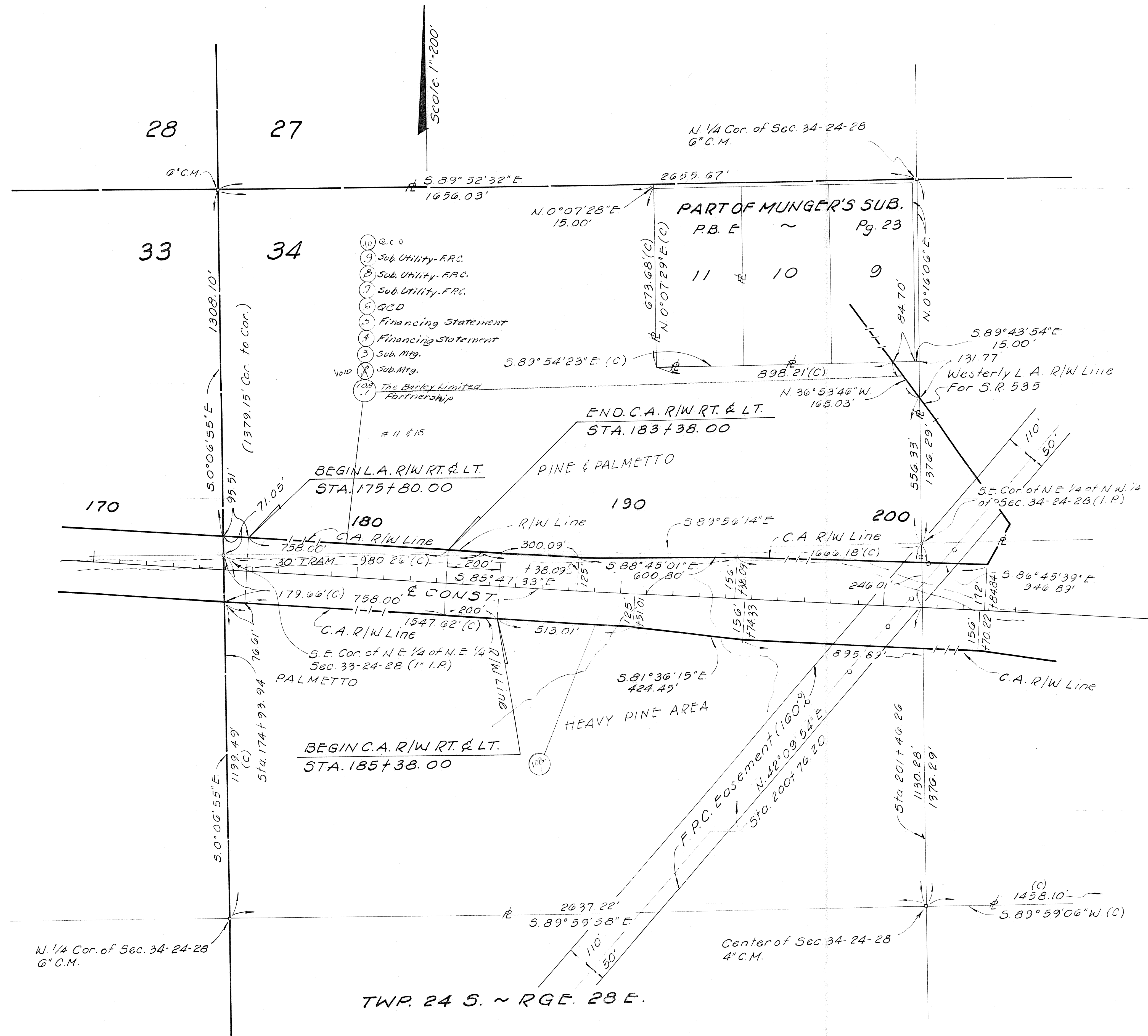
Bk No 1020994 (Proposed Initialing)
Surveyor: L L Girvin

UTILITIES

F.P.C. = Fla. Power Corp. St. Petersburg
F.T.C. = Fla. Telephone Corp. Leesburg



CONNECTOR RD. - I-4 (DISNEY WORLD) Interchange

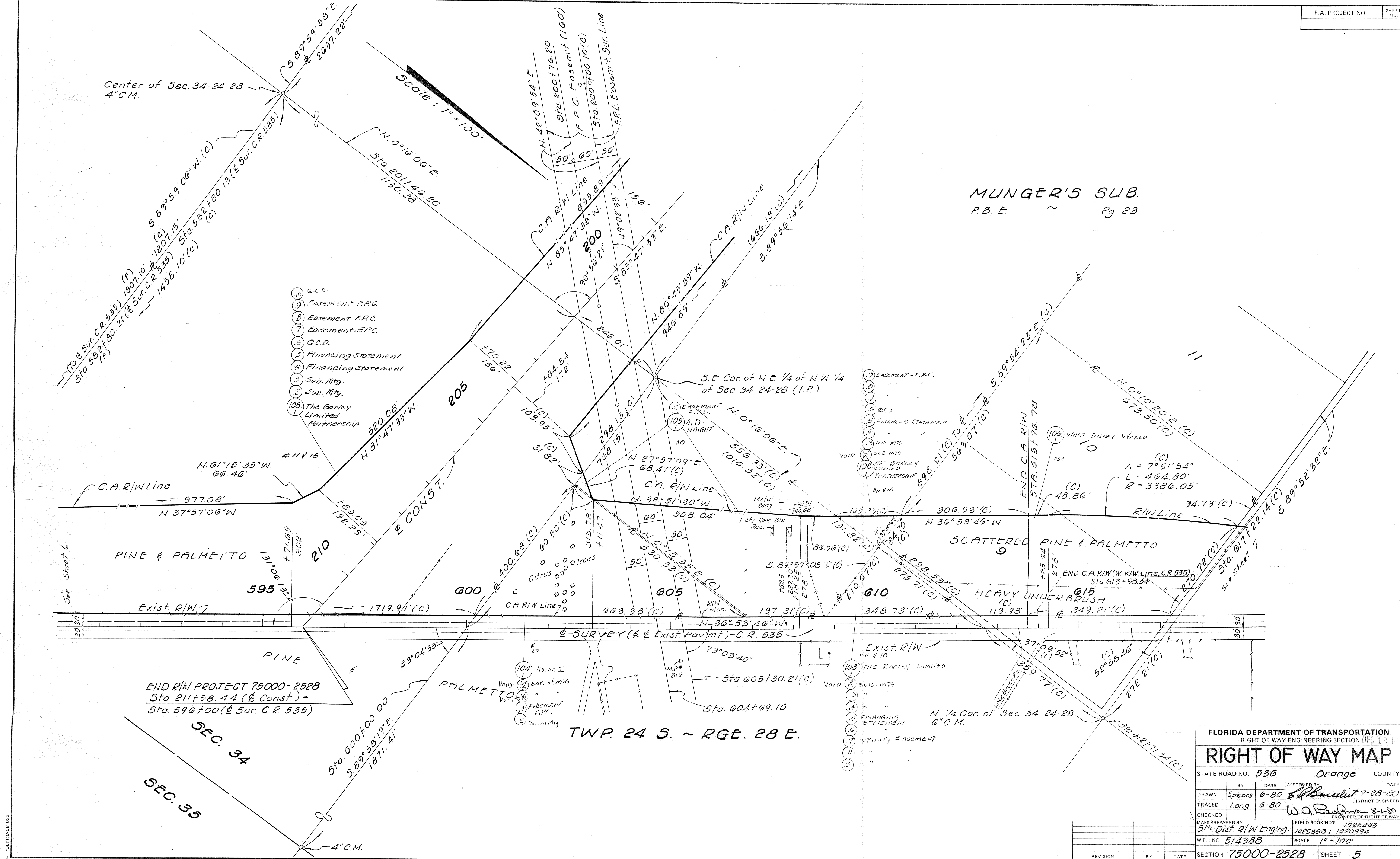


TWP. 24 S. ~ RGE. 28 E.

FLORIDA DEPARTMENT OF TRANSPORTATION			
RIGHT OF WAY ENGINEERING SECTION			
RIGHT OF WAY MAP			
STATE ROAD NO. 536		ORANGE COUNTY	
BY	DATE	APPROVED BY	DATE
DRAWN	SPEARS 12-80	CA. Benedict	12-17-80
TRACED	LONG 12-80	by WSM	DISTRICT ENGINEER
CHECKED		W.A. Laufman	12-29-80
MADE PREPARED BY		FIELD BOOK NOS. 1025463	
5th Dist. R/W Eng'g.		1025383, 1020994	
W.P.I. NO. 514388		SCALE 1" = 200'	
SECTION 75000-2528		SHEET 4	

CONNECTOR RD. - I-4 (DISNEY WORLD) Interchange

MUNGER'S SUB.
P.B.E. ~ Pg. 23



CONNECTOR RD. - I-4 (DISNEY WORLD) Interchange.

MUNGER'S SUB.
P.B. E. Pg. 23

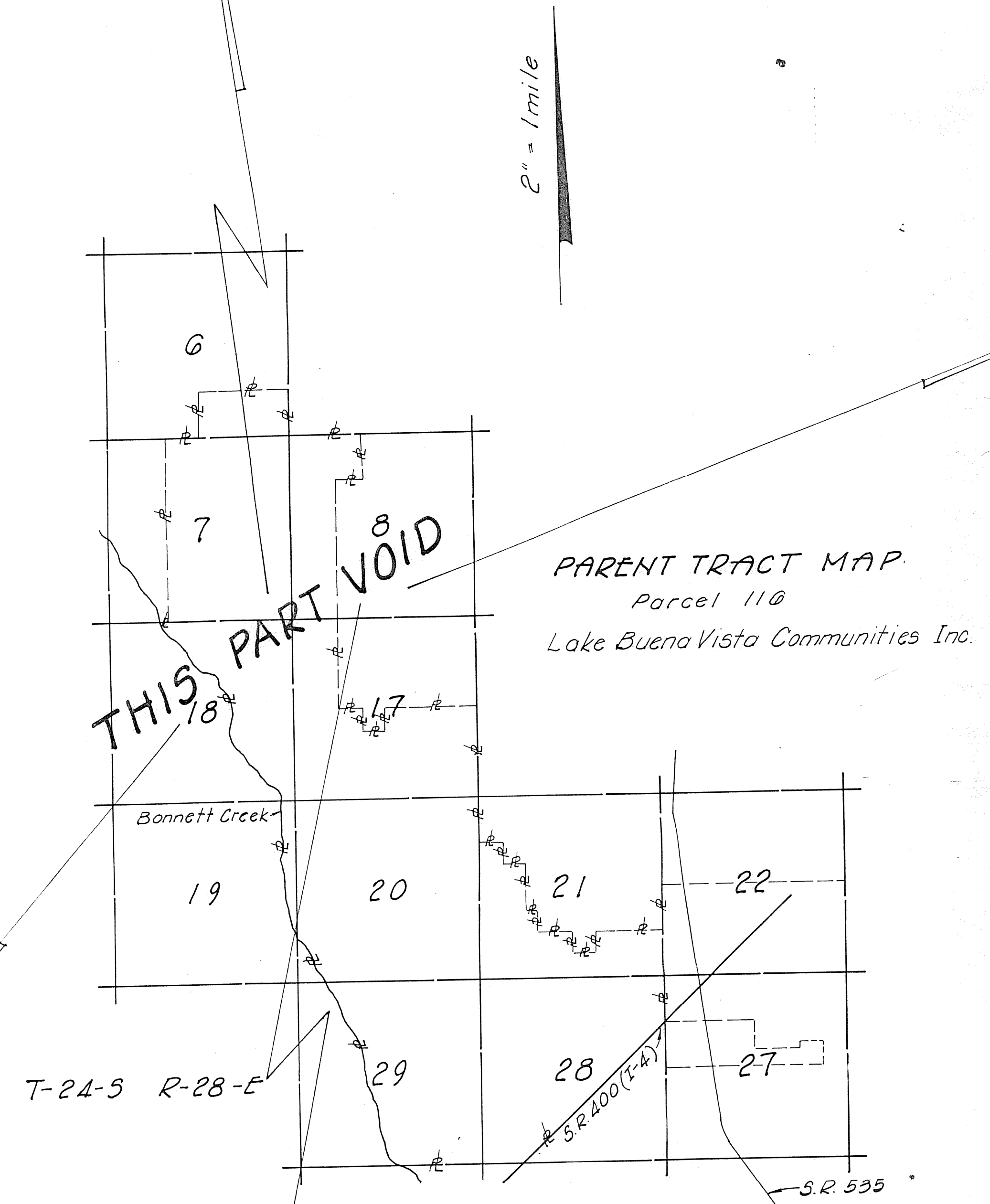
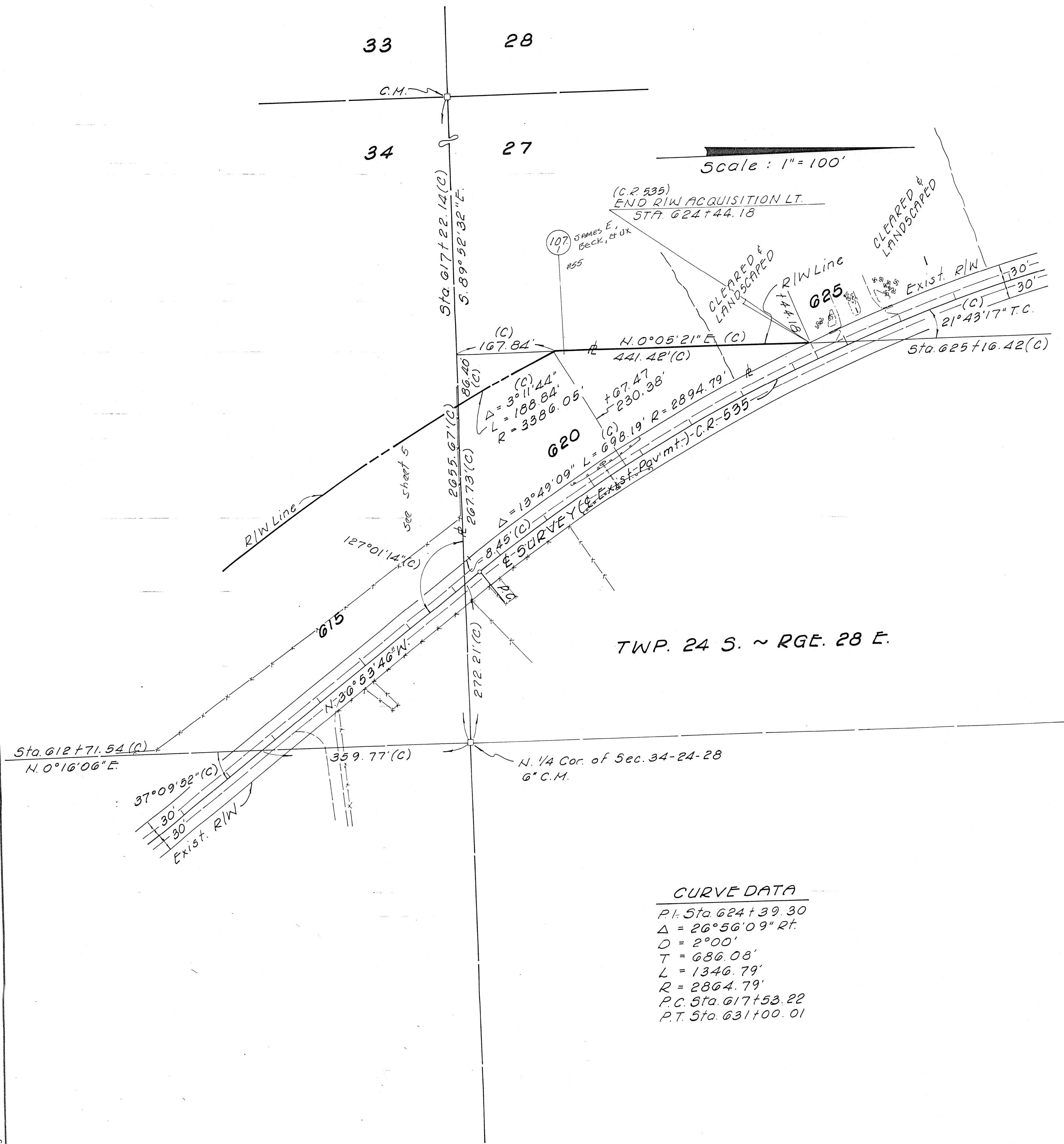
Scale: 1" = 100'

TWP. 24 S. ~ RGE. 28 E.

FLORIDA DEPARTMENT OF TRANSPORTATION RIGHT OF WAY ENGINEERING SECTION SEP 30 1980			
RIGHT OF WAY MAP			
STATE ROAD NO. 536		Orange COUNTY	
BY	DATE	APPROVED BY	DATE
Spears	5-80	L. H. Bonnell	7-28-80
TRACED	Long	5-80	DISTRICT ENGINEER
CHECKED			W. A. ... 8-1-80 ENGINEER OF RIGHT OF WAY
MAPS PREPARED BY 5th Dist. R/W Eng'g.		FIELD BOOK NO'S. 1025463 1025383; 1020994	
W.P.I. NO. 514368		SCALE 1" = 100'	
SECTION 75000-2528		SHEET 6	

CONNECTOR RD. - I-4 (DISNEY WORLD) Interchange

PLAT 033



FLORIDA DEPARTMENT OF TRANSPORTATION			
RIGHT OF WAY ENGINEERING SECTION			
RIGHT OF WAY MAP			
STATE ROAD NO. 536		Orange COUNTY	
DRAWN BY	DATE	APPROVED BY	DATE
Spears	6-80	W.O. Spears	7-28-80
TRACED	Long	Long	6-80
CHECKED			
MAPS PREPARED BY		FIELD BOOK NO'S	
5th Dist. R/W Eng'g		1025383; 1020994	
W.P.I. NO. 514388		SCALE 1" = 100'	
SECTION 75000-2528		SHEET 7	

CONNECTOR RD. - I-4 (DISNEY WORLD) Interchange